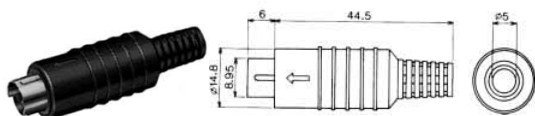




DIN PLUGS & JACKS

No. MP-371/3 ~ 8

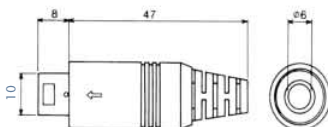
MINI. CIRCULAR CONNECTOR SOLDER TYPE



No. of Contact	3P	4P	5P	6P	7P	8P
CONTACT CONFIGURATION						
Model	MP-371/3	MP-371/4	MP-371/5	MP-371/6	MP-371/7	MP-371/8

No. MP-371/9 ~ 10

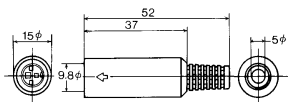
MINI. CIRCULAR CONNECTOR SOLDER TYPE



No. of Contact	9P	10P
CONTACT CONFIGURATION		
No. of Contact	MP-371/9	MP-371/10

No. MJ-372/3 ~ 9

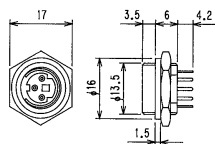
MINI DIN IN-LINE SOCKET



Arrange-ment of Contacts							
Model	MJ-372/3	MJ-372/4	MJ-372/5	MJ-372/6	MJ-372/7	MJ-372/8	MJ-372/9

No. MJ-381/3 ~ 8

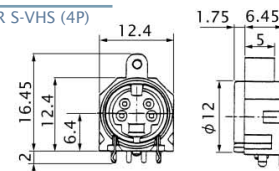
MINI DIN SOCKET PANEL MOUNT TYPE



Arrange-ment of Contacts					
Model	MJ-381/3	MJ-381/4	MJ-381/5	MJ-381/6	MJ-381/8

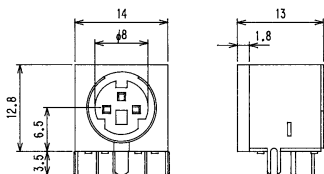
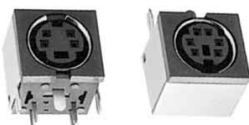
No. MJ-929A0

MINI DIN SOCKET FOR S-VHS (4P)



No. MJ-373/3 ~ 9

MINI DIN SOCKET SERIES



Arrange-ment of Contacts							
Model	MJ-373/3	MJ-373/4	MJ-373/5	MJ-373/6	MJ-373/7	MJ-373/8	MJ-373/9

No. MC-MD PW

MINI DIN CABLE PLUG TO PLUG L=1500mm



Available Product Line

MODEL No.	
No. MC-MD3PW	MINI DIN 3P PLUG + MINI DIN 3P PLUG
No. MC-MD4PW	MINI DIN 4P PLUG + MINI DIN 4P PLUG
No. MC-MD4SPW	MINI DIN 4P PLUG (S端子) + MINI DIN 4P PLUG (S端子) for S-VHS
No. MC-MD5PW	MINI DIN 5P PLUG + MINI DIN 5P PLUG
No. MC-MD6PW	MINI DIN 6P PLUG + MINI DIN 6P PLUG
No. MC-MD7PW	MINI DIN 7P PLUG + MINI DIN 7P PLUG
No. MC-MD8PW	MINI DIN 8P PLUG + MINI DIN 8P PLUG

No. MC-MD PJ

MINI DIN CABLE PLUG TO SOCKET L=1500mm

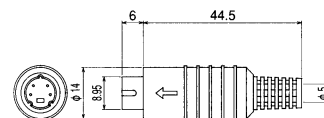


Available Product Line

MODEL No.	
No. MC-MD3PJ	MINI DIN 3P PLUG + MINI DIN 3P SOCKET
No. MC-MD4PJ	MINI DIN 4P PLUG + MINI DIN 4P SOCKET
No. MC-MD5PJ	MINI DIN 5P PLUG + MINI DIN 5P SOCKET
No. MC-MD6PJ	MINI DIN 6P PLUG + MINI DIN 6P SOCKET
No. MC-MD8PJ	MINI DIN 8P PLUG + MINI DIN 8P SOCKET

No. MP-374

MINI. CIRCULAR CONNECTOR 4P FOR S-VHS



No. MP-371C

CABLE CLAMP FOR MP-371 & MJ-372
MP-371, MJ-372用コードクランプ

