



Seeeduino Lotus User Manual

Release date: 2015/9/22

Version: 1.0

Wiki: http://www.seeedstudio.com/wiki/Seeeduino_Lotus_v1.0

Bazaar: http://www.seeedstudio.com/depot/Seeeduino-Lotus-ATMega328-Board-with-Grove-Interface-p-1942.html?cPath=6_7

Document Revision History

Revision	Date	Author	Description
1.0	Sep 22, 2015	Loovee	Create file

Contents

Document Revision History	2
1. Introduction	2
2. Specification	3
3. Interface Function	4
4. Driver Install	5
4.1 Windows/Linux	5
4.2 Mac OS	5
5. Usage	6
5.1 Hardware Installation	6
6. Bug Report	10
7. Resource	11

Disclaimer

For physical injuries and possessions loss caused by those reasons which are not related to product quality, such as operating without following manual guide, natural disasters or force majeure, we take no responsibility for that.

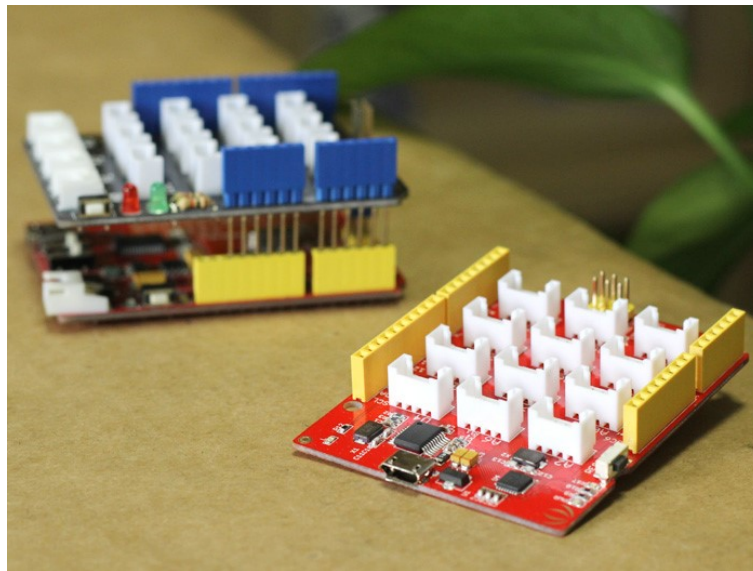
Under the supervision of Seeed Technology Inc., this manual has been compiled and published which covered the latest product description and specification. The content of this manual is subject to change without notice.

Copyright

The design of this product (including software) and its accessories is under tutelage of laws. Any action to violate relevant right of our product will be penalized through law. Please consciously observe relevant local laws in the use of this product.

1. Introduction

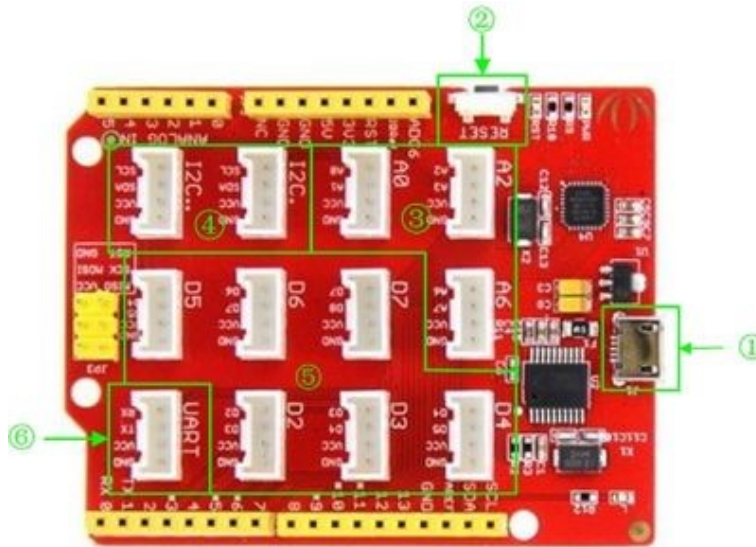
Seeeduino Lotus is an ATMEGA328 Microcontroller development board. It is a combination of Seeeduino and Base Shield. It uses an Atmel ATMEGA328P-MU and CH340. ATMEGA328P-MU is a high performance, low power AVR 8-Bit Microcontroller. CH340 is a USB bus converter chip that can realize a USB to serial interface. Seeeduino Lotus has 14 digital input/outputs (6 of which can output PWM) and 7 analog input/outputs, a micro USB connection, an ICSP header, 12 Grove connections, a reset button.



2. Specification

- Microcontroller: ATmega328P-MU
- Operating Voltage: 5V
- Digital I/O Pins: 14
- PWM Channels: 6
- Analog Input Channels: 7
- DC Current per I/O Pin: 40 mA
- Flash Memory: 32 KB (ATmega328P-MU)
- RAM: 2 KB (ATmega328P-MU)
- EEPROM: 1 KB (ATmega328P-MU)
- Clock Speed: 16 MHz

3. Interface Function



- ①: Micro USB
- ②: Reset button
- ③: Analog Ports: Analog sensors can return readings ranging from 0 to 1023. Compared with digital sensors that only return 0 or 1, analog readings are more detailed and precise.
- ④: I2C Ports: I2C is a low-speed bus protocol that transfers data via two wire : SCL and SDA . SCL is the clock line that synchronizes data transfer over the I2C bus, and SDA is the data line.
- ⑤: Digital Ports: Normally, they are used when reading a digital sensor that only outputs 0 or 1, or turning ON or OFF an actuator.
- ⑥: UART Port: We can control serial device by this port.

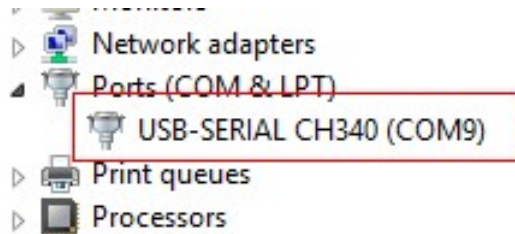
4. Driver Install

Seeeduino Lotus uses CH340 to download. It needs a driver to be installed.

4.1 Windows/Linux

Totally compatible with serial application program in computer endpoint Windows operation system

- 1) Plug it to computer's USB Port.
- 2) Wait till you find it in Device Manager.
- 3) If you do not find the port, please download the Driver from [Here](#)



4.2 Mac OS

Download the driver from here: http://www.wch.cn/download/CH341SER_MAC_ZIP.html

On Mac OS Yosemite:

- 1) Download and install the CH340/CH341 driver package
- 2) Open Terminal program (located in /Applications/Utilities/)
- 3) Type command: `sudo nvram boot-args="debug=0x146 kext-dev-mode=1"`
- 4) Enter your password for sudo
- 5) Restart your computer

The driver is not signed in Yosemite, so you need to bypass the signed driver check.

If you want restore your Mac' s setting, you can exit developer mode by redefining the boot-arg to your previous settings, or clear your boot-args as follows: `sudo nvram -d boot-args`

To see what the current boot-args are, if any, type: `sudo nvram boot-args`

5. Usage

Here is how to use Seeeduino Lotus.

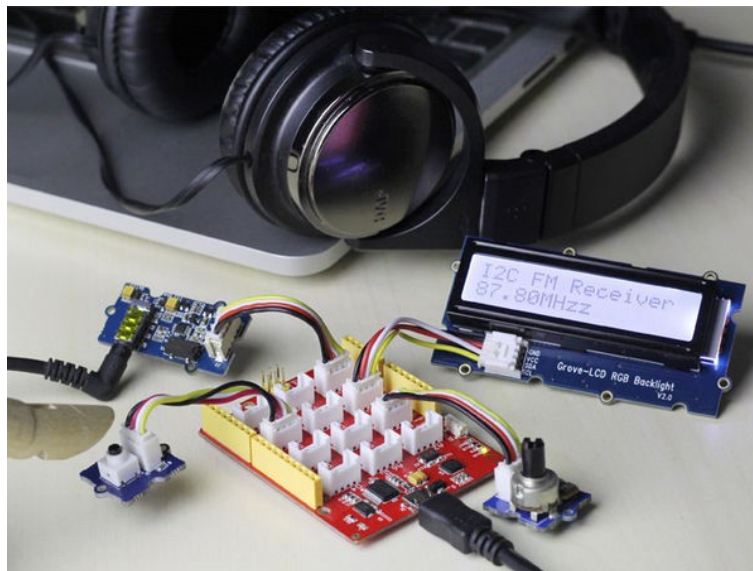
5.1 Hardware Installation

Part lists:

- [Seeeduino Lotus v1.0](#)
- [Grove - LCD RGB Backlight](#)
- [Grove - I2C FM Receiver](#)
- [Grove - Button](#)
- [Grove - Rotary Angle Sensor](#)

Hardware Connection

Hardware linking is very easy, Grove - LCD RGB Backlight and Grove - I2C FM Receiver communicate over I2C, Grove - Button is a digital input, Grove - Rotary Angle Sensor is an analog input. So it can be linked as shown below.

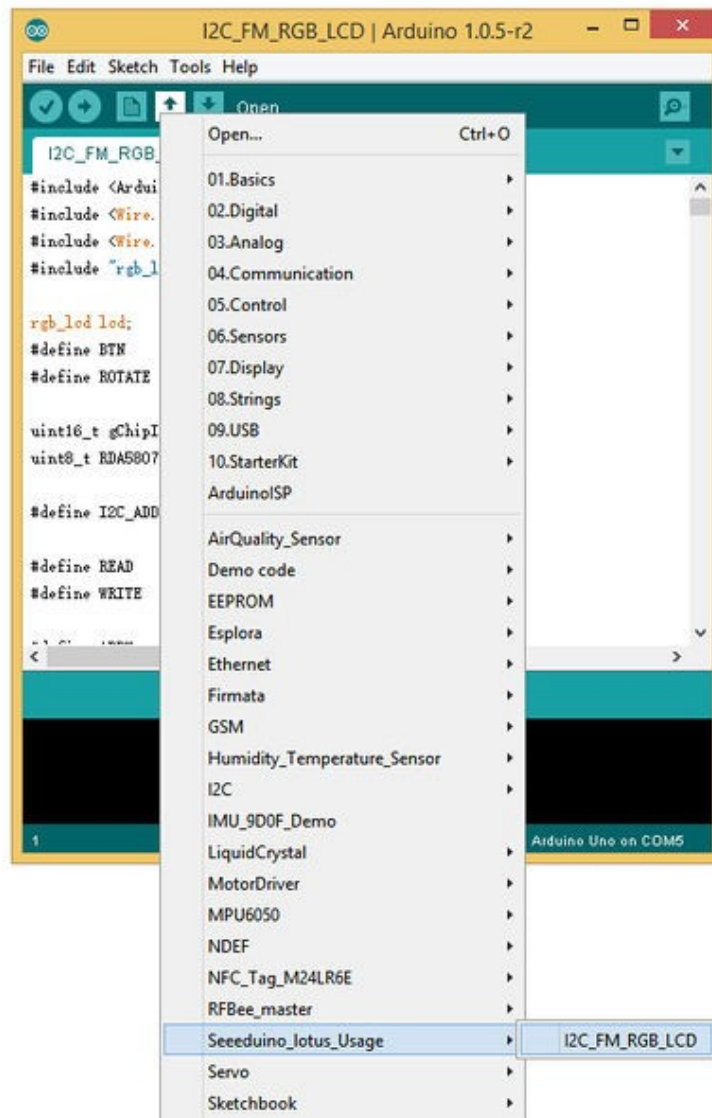


Software Part

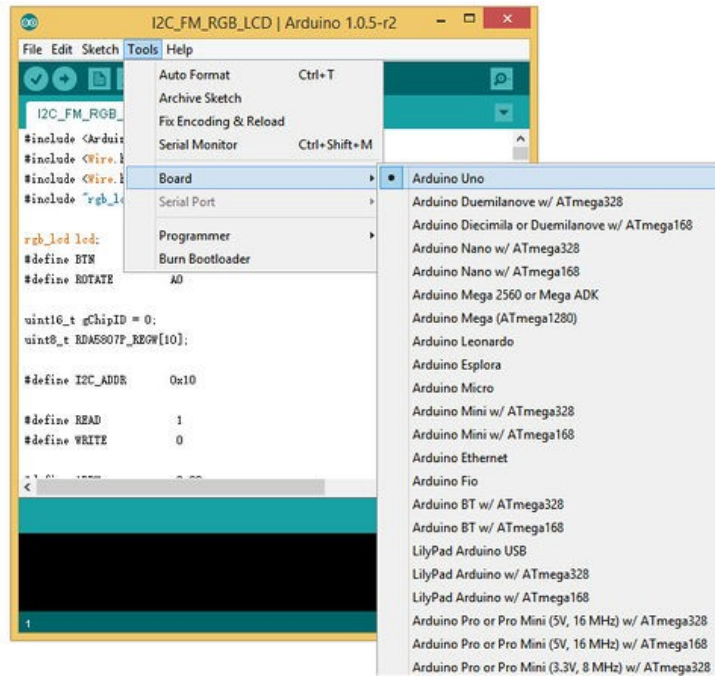
- 1) To download the demo code in github, click [here](#).
- 2) To install Arduino Library, please click [Here](#)

- 3) Open the I2C_FM_RGB_LCD example sketch:

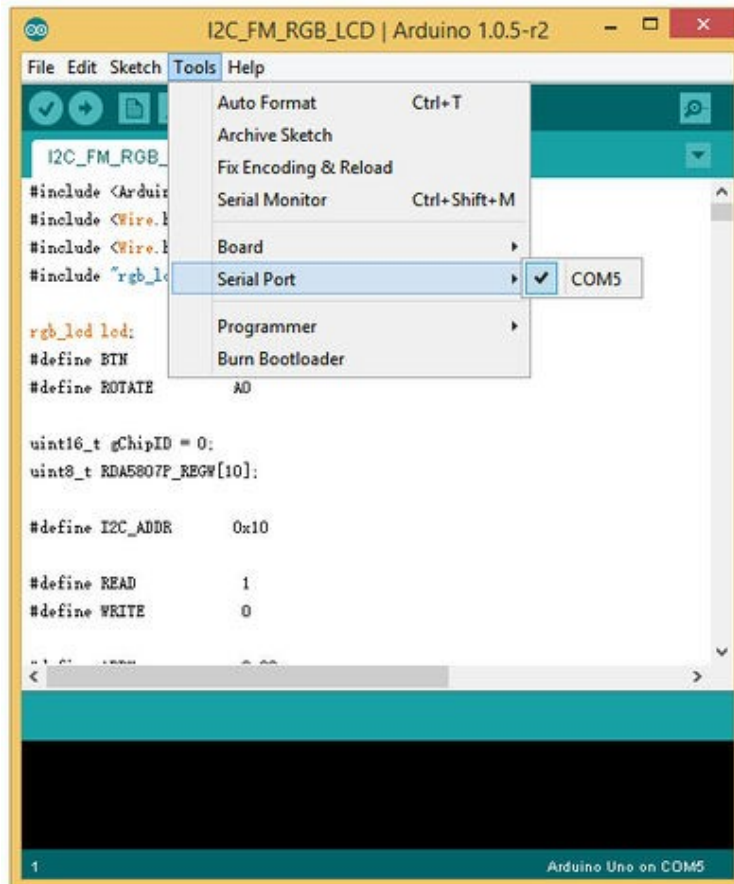
File->Examples->Seeeduino_lotus_Usage->I2C_FM_RGB_LCD



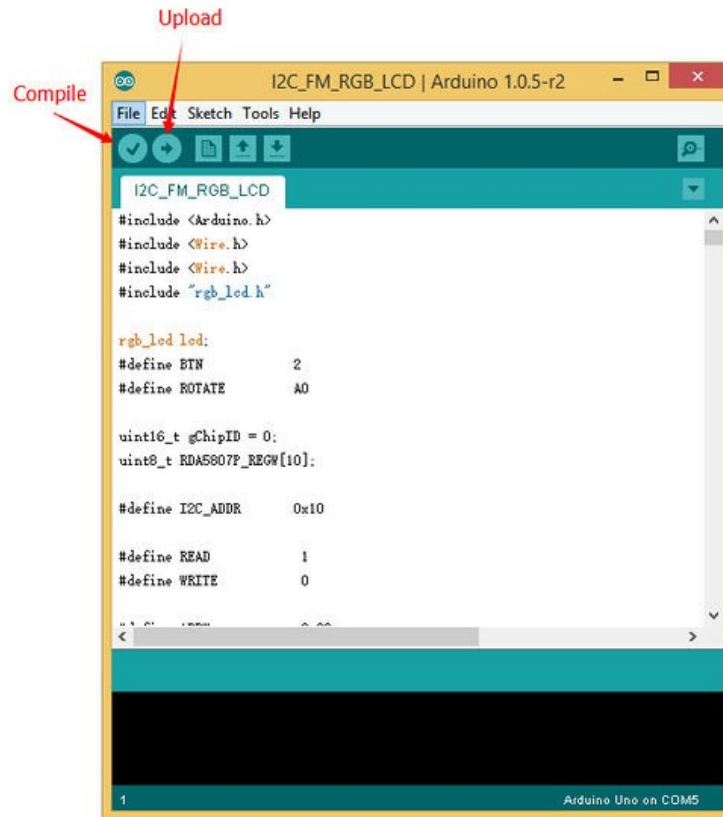
- 4) In the Tools > Board menu, select Arduino Uno.



- 5) Select the serial device of the Arduino board from the Tools | Serial Port menu.

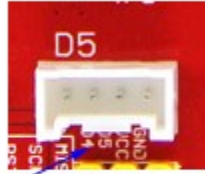


- 6) Now, simply click the "Upload" button in the environment. Wait a few seconds - If the upload is successful, the message "Done uploading." will appear in the status bar.



6. Bug Report

The silk printed near the D5 Grove connector has an error. The D4, D5 should be D5,D6. We will fix this error as soon as possible.



It should be D5,D6

7. Resource

- [Seeeduino Lotus Eagle file](#)
- [Seeeduino Lotus bootloader](#)
- [Seeeduino Lotus PDF file](#)