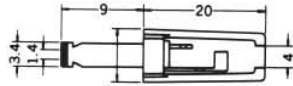


PLUG TYPE 3.4 × 1.4

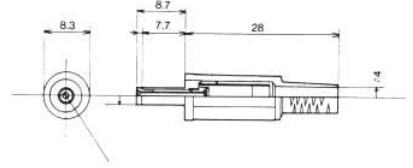
No. MP-121WK

3.4 × 1.4 DC PLUG
(DC12V 0.5A)



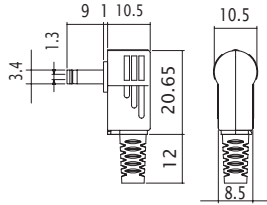
No. MP-121WH

3.4 × 1.4 DC PLUG
(DC12V 0.5A)



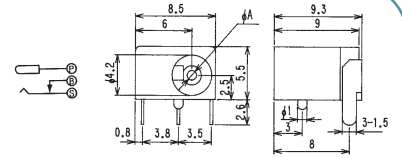
No. MP-121WN

3.4 × 1.4 RIGHT ANGLE DC PLUG
(DC12V 0.5A)



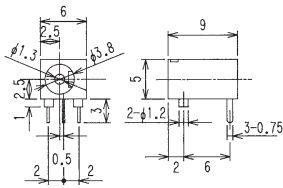
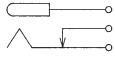
No. MJ-82-1

DC JACK FOR P.C.B.
PLUG TYPE: 3.4 × 1.4
(DC6V 0.5A)



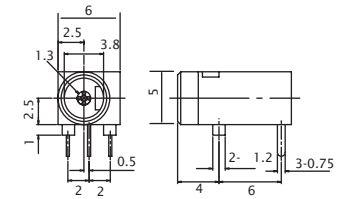
No. MJ-83

DC JACK FOR P.C.B.
PLUG TYPE: 3.4 × 1.4
(DC6V 0.5A)



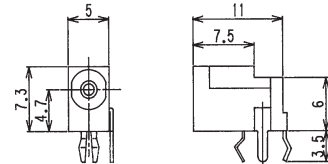
No. MJ-84

DC JACK FOR P.C.B.
PLUG TYPE: 3.4 × 1.4
(DC6V 0.5A)



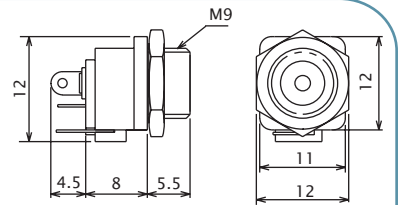
No. MJ-25N1

DC JACK FOR P.C.B.
PLUG TYPE: 3.4 × 1.4
(DC6V 0.5A)



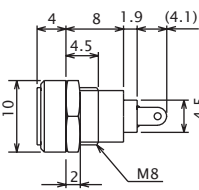
No. MJ-44

PANEL MOUNT DC JACK
PLUG TYPE: 3.4 × 1.4
(DC12V 0.5A)



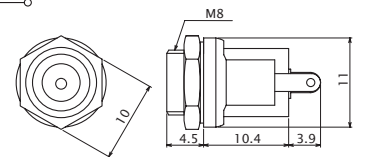
No. MJ-99

PANEL MOUNT DC JACK
PLUG TYPE: 3.4 × 1.4
(DC12V 0.5A)



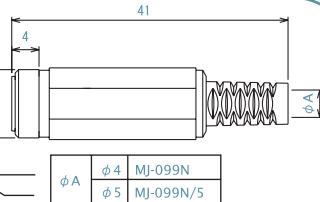
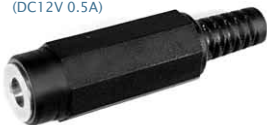
No. MJ-74

PANEL MOUNT DC JACK
PLUG TYPE: 3.4 × 1.4
(DC12V 0.5A)



No. MJ-099N

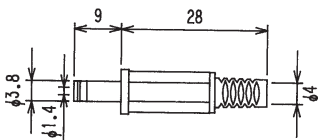
DC INLINE JACK
PLUG TYPE: 3.4 × 1.4
(DC12V 0.5A)



PLUG TYPE 3.8 × 1.4

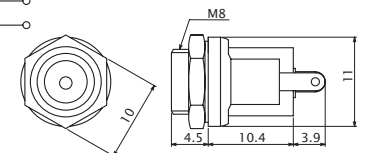
No. MP-138NK

3.8 × 1.4 DC PLUG
(DC12V 0.5A)



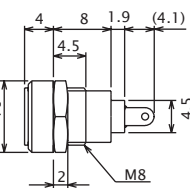
No. MJ-75

PANEL MOUNT DC JACK
PLUG TYPE: 3.8 × 1.4
(DC12V 0.5A)



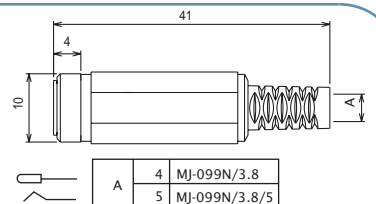
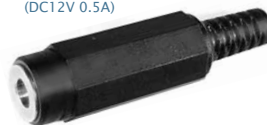
No. MJ-99/3.8

PANEL MOUNT DC JACK
PLUG TYPE: 3.8 × 1.4
(DC12V 0.5A)



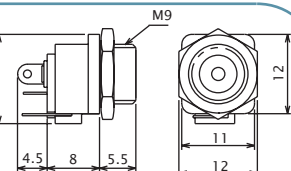
No. MJ-099N/3.8

DC INLINE JACK
PLUG TYPE: 3.8 × 1.4
(DC12V 0.5A)



No. MJ-45

PANEL MOUNT DC JACK
PLUG TYPE: 3.8 × 1.4
(DC12V 0.5A)



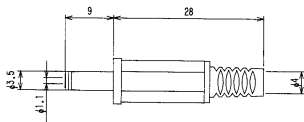


DC PLUGS & JACKS

PLUG TYPE 3.5 × 1.1

No. MP-135NK

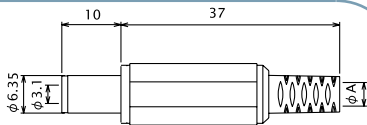
3.5 × 1.1 DC PLUG
(DC12V 0.5A)



PLUG TYPE 6.3 × 3.1

No. MP-065L

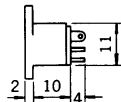
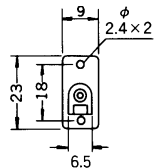
6.3 × 3.1 DC PLUG
(DC12V 2A)



ϕA	$\phi 4$	MJ-065L
	$\phi 5$	MJ-065L/5

No. MJ-065M

PANEL MOUNT DC JACK
PLUG TYPE: 6.3 × 3.1
(DC12V 2A)



Marushin electric mfg. co., ltd