



DC PLUGS & JACKS

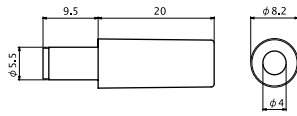
PLUG TYPE 5.5 × 2.1 & 5.5 × 2.5

No. MP-121M

5.5 × 2.1 DC PLUG (DC12V 0.5A)

No. MP-122M

5.5 × 2.5 DC PLUG (DC12V 1A)

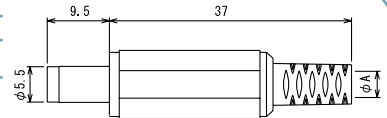


No. MP-121C

5.5 × 2.1 DC PLUG (DC12V 0.5A)

No. MP-122C

5.5 × 2.5 DC PLUG (DC12V 1A)



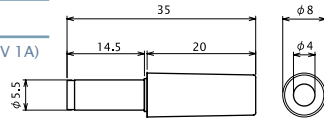
ϕA	$\phi 4$	MP-121C	MP-122C
	$\phi 5$	MP-121C/5	MP-122C/5

No. MP-136

5.5 × 2.1 LONG TYPE DC PLUG (DC12V 0.5A)

No. MP-137

5.5 × 2.5 LONG TYPE DC PLUG (DC12V 1A)

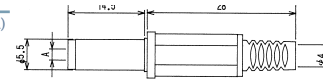


No. MP-136H

5.5 × 2.1 LONG TYPE DC PLUG (DC12V 0.5A)

No. MP-137H

5.5 × 2.5 LONG TYPE DC PLUG (DC12V 1A)

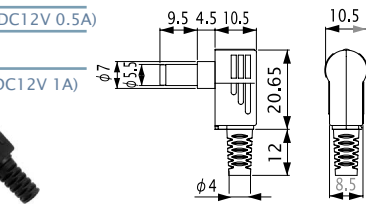


No. MP-136LN

5.5 × 2.1 RIGHT ANGLE DC PLUG (DC12V 0.5A)

No. MP-137LN

5.5 × 2.5 RIGHT ANGLE DC PLUG (DC12V 1A)



No. MC-2374

5.5 × 2.1 DC PLUG (DC12V 0.5A)

No. MC-2375

5.5 × 2.5 DC PLUG (DC12V 1A)



DC ADAPTOR CABLE L=1800mm

No. MJ-179P

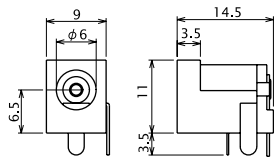
PLUG TYPE: 5.5 × 2.1 (DC12V 0.5A)

No. MJ-180P

PLUG TYPE: 5.5 × 2.5 (DC12V 1A)



DC JACK FOR P.C.B.



No. MC-2374L

5.5 × 2.1 DC PLUG (DC12V 0.5A)

No. MC-2375L

5.5 × 2.5 DC PLUG (DC12V 1A)



RIGHT ANGLE DC ADAPTOR CABLE L=1800mm

No. MJ-179SMT

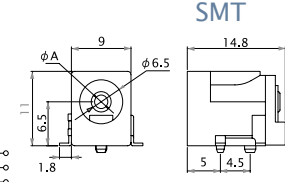
PLUG TYPE: 5.5 × 2.1 (DC12V 0.5A)

No. MJ-180SMT

PLUG TYPE: 5.5 × 2.5 (DC12V 1A)



DC JACK FOR P.C.B. SMT



No. MJ-196P

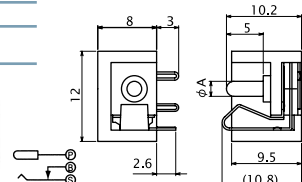
PLUG TYPE: 5.5 × 2.1 (DC12V 0.5A)

No. MJ-197P

PLUG TYPE: 5.5 × 2.5 (DC12V 1A)



DC JACK FOR P.C.B.



No. MJ-179LE-C

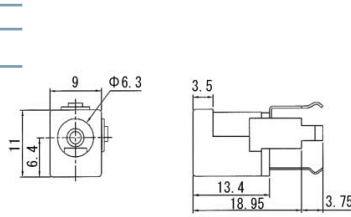
PLUG TYPE: 5.5 × 2.1 (DC12V 0.5A)

No. MJ-180LE-C

PLUG TYPE: 5.5 × 2.5 (DC12V 1A)



DC JACK FOR P.C.B.

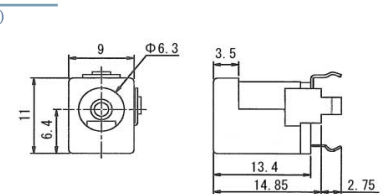


No. MJ-292DJ-C

PLUG TYPE: 5.5 × 2.1 (DC12V 0.5A)



DC JACK FOR P.C.B.

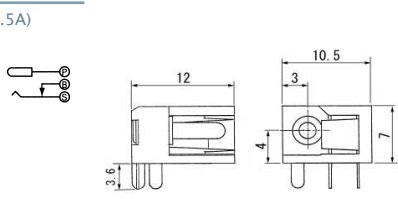


No. MJ-272DJ

PLUG TYPE: 5.5 × 2.1 (DC12V 0.5A)



DC JACK FOR P.C.B.



No. MJ-10

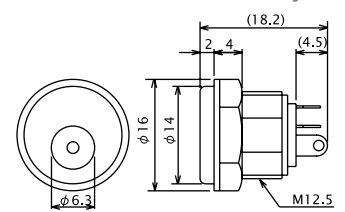
PLUG TYPE: 5.5 × 2.1 (DC12V 0.5A)

No. MJ-11

PLUG TYPE: 5.5 × 2.5 (DC12V 1A)



PANEL MOUNT DC JACK



No. MJ-14

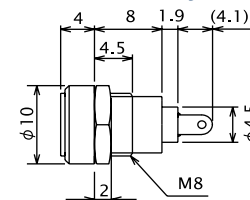
PLUG TYPE: 5.5 × 2.1 (DC12V 0.5A)

No. MJ-15

PLUG TYPE: 5.5 × 2.5 (DC12V 1A)



PANEL MOUNT DC JACK

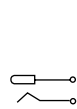


No. MJ-60

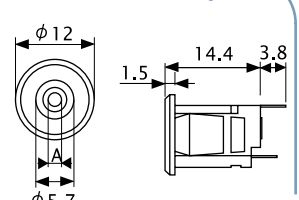
PLUG TYPE: 5.5 × 2.1 (DC12V 0.5A)

No. MJ-61

PLUG TYPE: 5.5 × 2.5 (DC12V 1A)



SNAP-IN MOUNT DC JACK





DC PLUGS & JACKS

PLUG TYPE 5.5 × 2.1 & 5.5 × 2.5

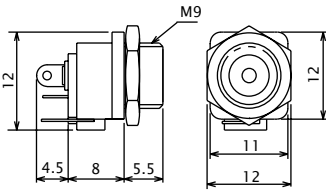
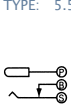
No. MJ-40

PLUG TYPE: 5.5 × 2.1 (DC12V 0.5A)

PNANEL MOUNT DC JACK

No. MJ-41

PLUG TYPE: 5.5 × 2.5 (DC12V 1A)



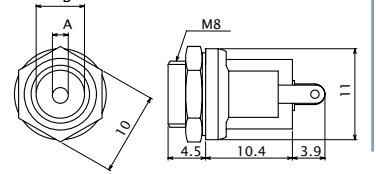
No. MJ-70

PLUG TYPE: 5.5 × 2.1 (DC12V 0.5A)

PNANEL MOUNT DC JACK

No. MJ-71

PLUG TYPE: 5.5 × 2.5 (DC12V 1A)



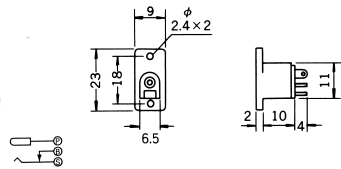
No. MJ-181M

PLUG TYPE: 5.5 × 2.1 (DC12V 0.5A)

PNANEL MOUNT DC JACK

No. MJ-182M

PLUG TYPE: 5.5 × 2.5 (DC12V 1A)



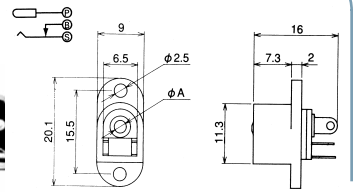
No. MJ-179

PLUG TYPE: 5.5 × 2.1 (DC12V 0.5A)

PNANEL MOUNT DC JACK

No. MJ-180

PLUG TYPE: 5.5 × 2.5 (DC12V 1A)



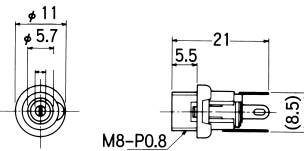
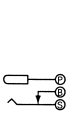
No. MJ-21

PLUG TYPE: 5.5 × 2.1 (DC12V 0.5A)

PNANEL MOUNT DC JACK

No. MJ-22

PLUG TYPE: 5.5 × 2.5 (DC12V 1A)



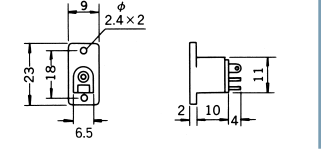
No. MJ-181MS

PLUG TYPE: 5.5 × 2.1 (DC12V 0.5A)

PNANEL MOUNT DC JACK (SCREW TYPE)

No. MJ-182MS

PLUG TYPE: 5.5 × 2.5 (DC12V 1A)



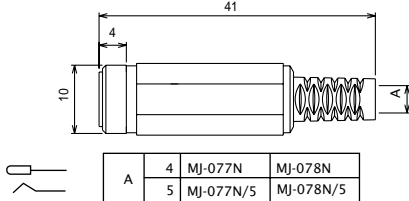
No. MJ-077N

PLUG TYPE: 5.5 × 2.1 (DC12V 0.5A)

DC INLINE JACK

No. MJ-078N

PLUG TYPE: 5.5 × 2.5 (DC12V 1A)



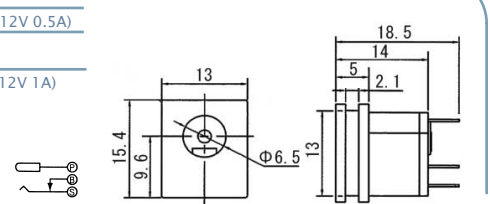
No. MJ-196E-C

PLUG TYPE: 5.5 × 2.1 (DC12V 0.5A)

DC JACK INSERT TYPE

No. MJ-197EX

PLUG TYPE: 5.5 × 2.5 (DC12V 1A)



No. MC-2376

PLUG TYPE: 5.5 × 2.1 (DC12V 0.5A)

DC EXTENTION CABLE L=1800mm

No. MC-2377

PLUG TYPE: 5.5 × 2.5 (DC12V 1A)



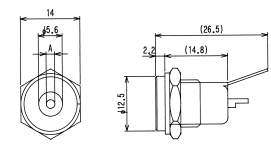
No. MJ-21AM

PLUG TYPE: 5.5 × 2.1 (DC12V 0.5A)

PNANEL MOUNT DC JACK

No. MJ-22AM

PLUG TYPE: 5.5 × 2.5 (DC12V 1A)



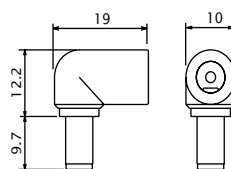
No. MA-121SL

PLUG TYPE: 5.5 × 2.1用

DC PLUG ADAPTOR STRAIGHT PLUG TO RIGHT ANGLE PLUG

No. MA-122SL

PLUG TYPE: 5.5 × 2.5用



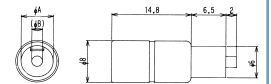
No. MJ-23

PLUG TYPE: 5.5 × 2.1 (DC12V 0.5A)

DC INLINE JACK FOR MOLDING

No. MJ-24

PLUG TYPE: 5.5 × 2.5 (DC12V 1A)



Marushin electric mfg. co., ltd.



DC PLUGS & JACKS

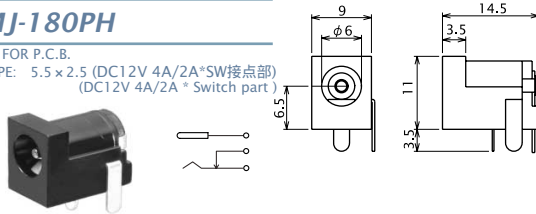
PLUG TYPE 5.5x2.1 & 5.5x2.5 高容量タイプ High-capacity current type

No. MJ-179PH

DC JACK FOR P.C.B.

PLUG TYPE: 5.5 x 2.1 (DC12V 4A/2A*SW接点部)
(DC12V 4A/2A* Switch part)

* UL94V-0材使用
Use of flame retardant material (UL94V-0)



No. MJ-180PH

DC JACK FOR P.C.B.

PLUG TYPE: 5.5 x 2.5 (DC12V 4A/2A*SW接点部)
(DC12V 4A/2A* Switch part)



No. MP-121-1

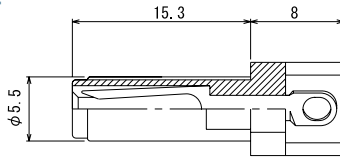
5.5 x 2.1 DC PLUG FOR MOLDING
(DC12V 4A)

* センターコンタクトをフォーク端子（音叉形）
形状とし、接触の安定化を図りました。
Two-point contacts assure highly reliable electrical
and mechanical connection



No. MP-122-1

5.5 x 2.5 DC PLUG FOR MOLDING
(DC12V 4A)



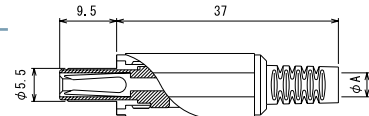
No. MP-121CF

5.5 x 2.1 DC PLUG (DC12V 4A)

* センターコンタクトをフォーク端子（音叉形）
形状とし、接触の安定化を図りました。
Two-point contacts assure highly reliable electrical
and mechanical connection

No. MP-122CF

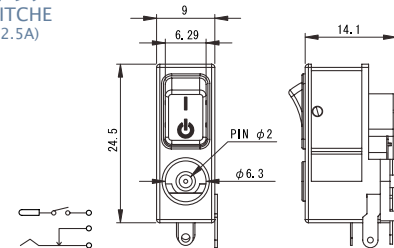
5.5 x 2.5 DC PLUG (DC12V 4A)



φA	φ4	MP-121CF	MP-122CF
	φ5	MP-121CF/5	MP-122CF/5

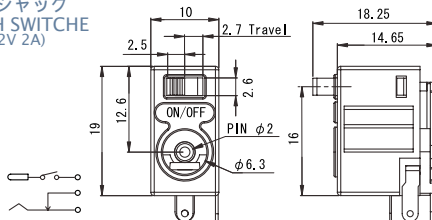
No. MJ-R02

ON-OFFスイッチ付DCジャック
DC POWER JACK WITH SWITCH
PLUG TYPE: 5.5 x 2.1 (DC12V 2.5A)



No. MJ-S04

ON-OFFスイッチ付DCジャック
DC POWER JACK WITH SWITCH
PLUG TYPE: 5.5 x 2.1 (DC12V 2A)



Marushin electric mfg. co., ltd