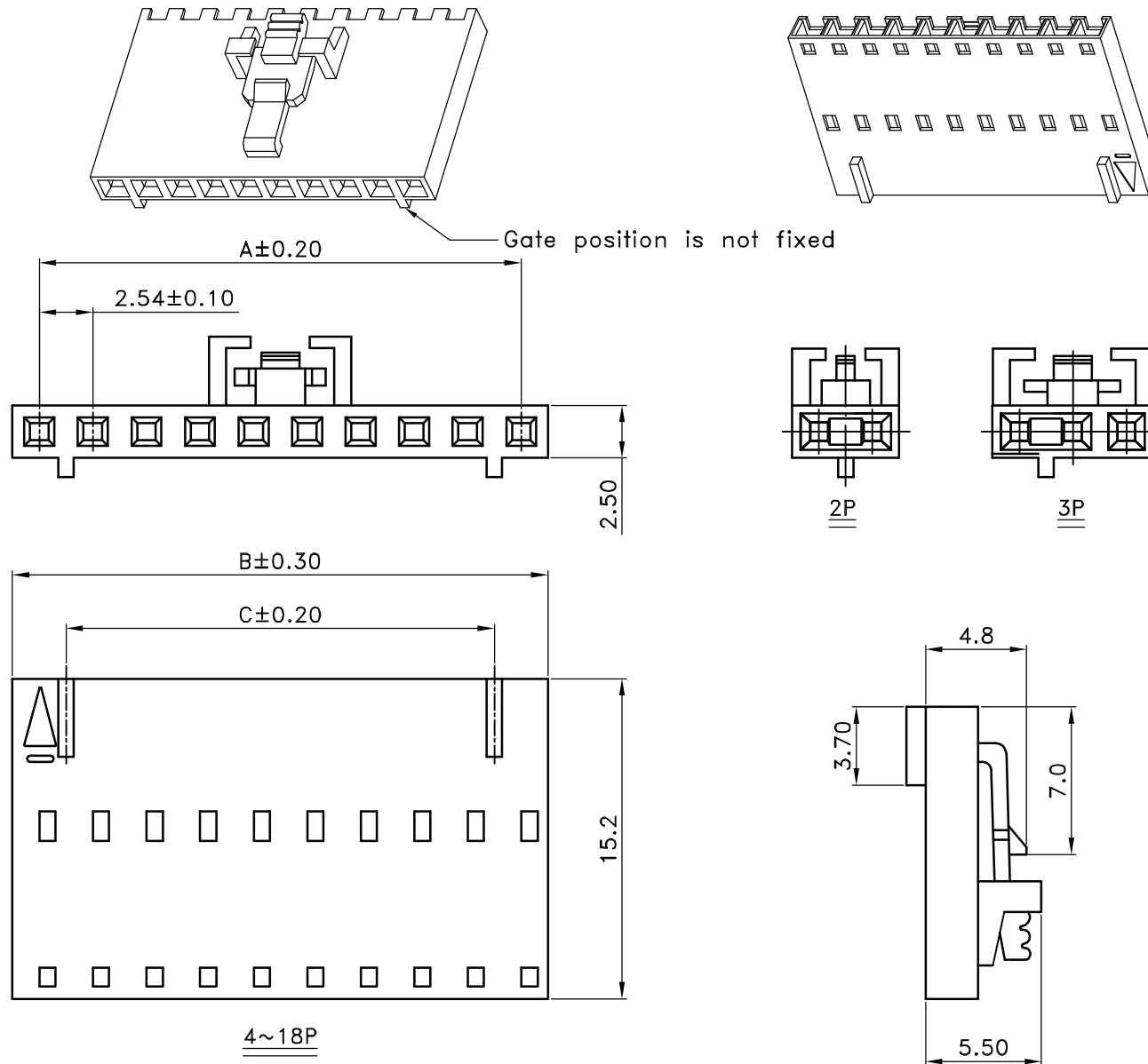


QILCS-xxx

■ SPECIFICATIONS

- Current Rating : 3A AC/DC
- Withstanding Voltage : 1,000V AC/minute
- Insulation Resistance : 1,000M Ω min
- Temperature Range : -25 $^{\circ}$ C to +85 $^{\circ}$ C
- Contact Resistance : 20m Ω max

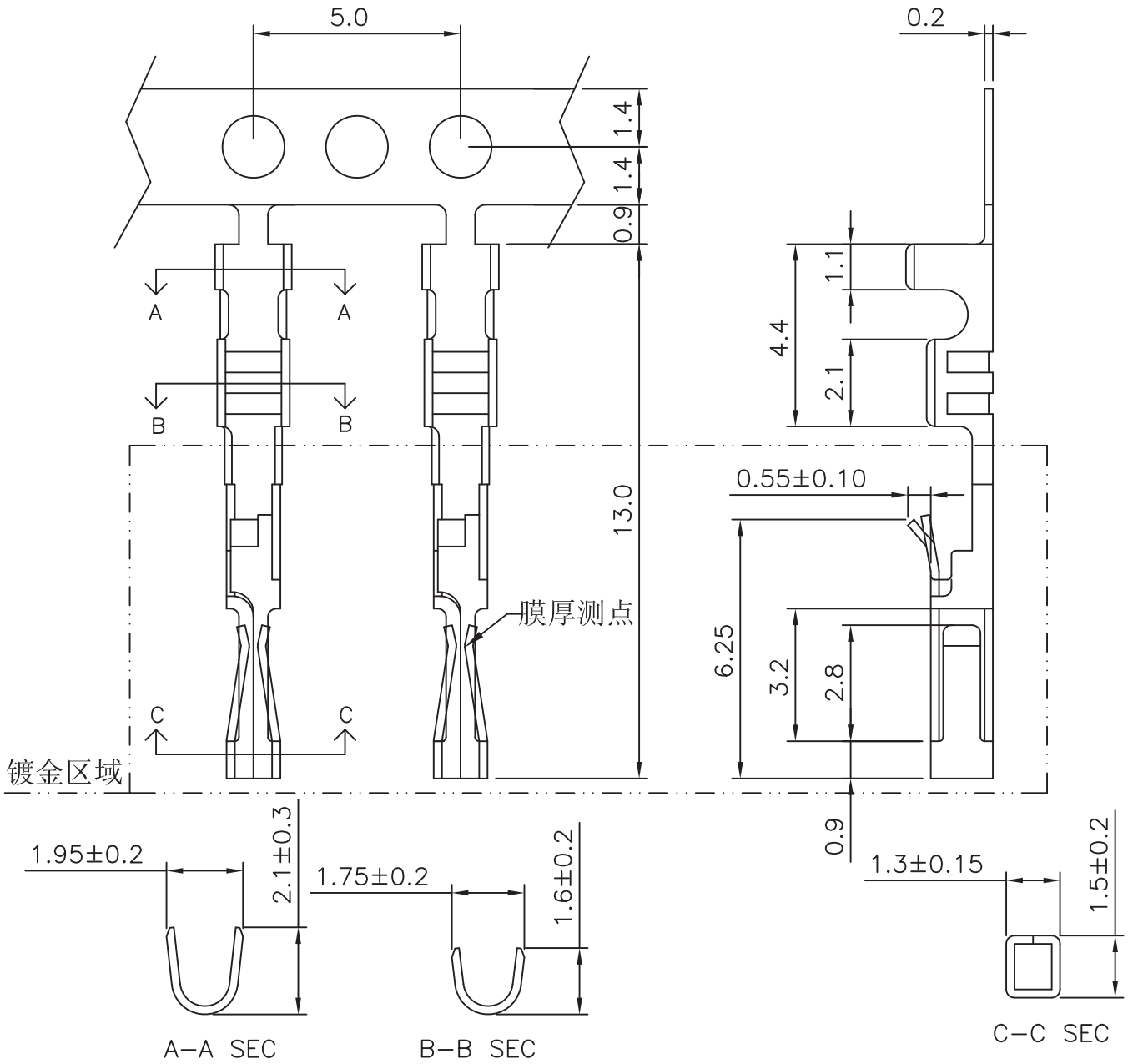
Poles	Dimensions(mm)		
	A	B	C
2	2.54	5.20	-----
3	5.08	7.80	-----
4	7.62	10.30	5.08
5	10.16	12.90	7.62
6	12.70	15.40	10.16
7	15.24	18.00	12.70
8	17.78	20.50	15.24
9	20.32	23.10	17.78
10	22.86	25.60	20.32
11	25.40	28.10	22.86
12	27.94	30.70	25.40
13	30.48	33.20	27.94
14	33.02	35.80	30.48
15	35.56	38.30	33.02
16	38.10	40.90	35.56
17	40.64	43.40	38.10
18	43.18	46.00	40.64
19	45.72	48.50	43.18
20	48.26	51.10	45.72
21	50.80	53.60	48.26
22	53.34	56.20	50.80
23	55.88	58.70	53.34
24	58.42	61.20	55.88
25	60.96	63.80	58.42



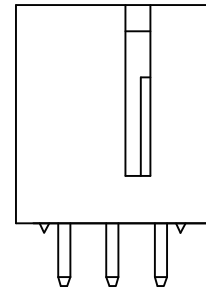
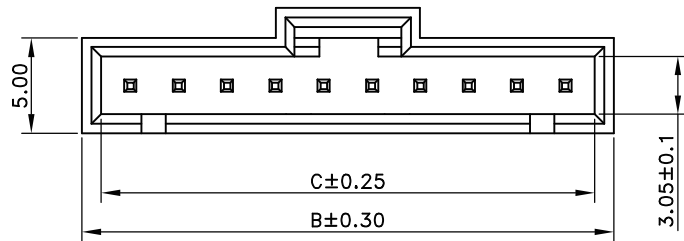
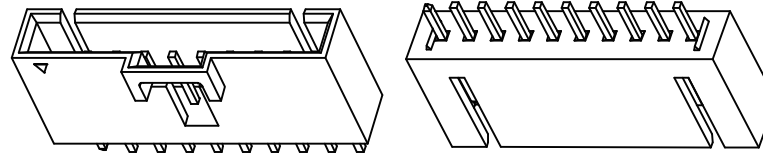
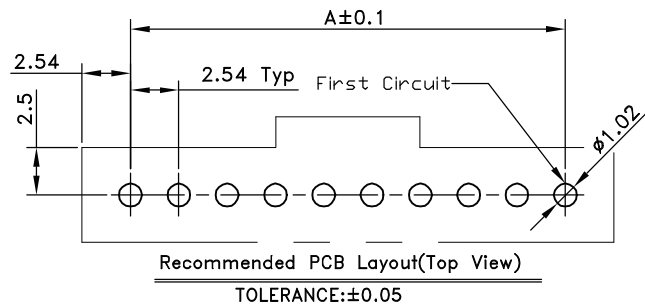
QILC-ZU

■ SPECIFICATIONS

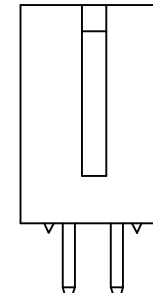
- Voltage Rating : 250 V AC/DC
- Current Rating : 3A AC/DC
- Withstanding Voltage : 1,000V AC/minute
- Insulation Resistance : 1,000MΩ min
- Temperature Range : - 25°C to + 85°C
- Contact Resistance : 20mΩ max



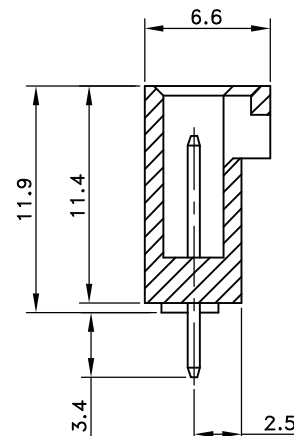
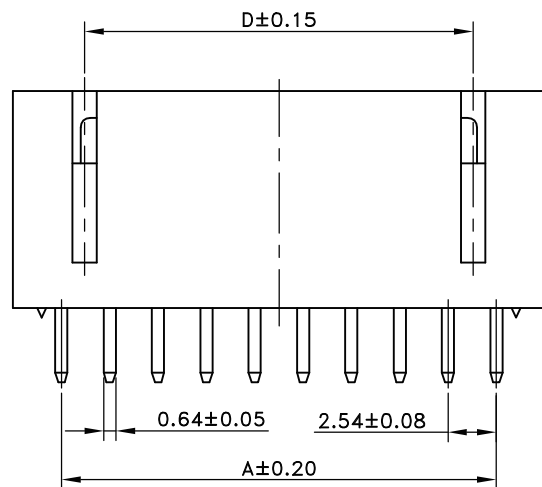
QILCIP-xxx



3 Circuit



2 Circuit

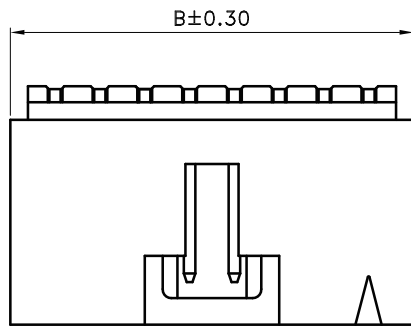


■ SPECIFICATIONS

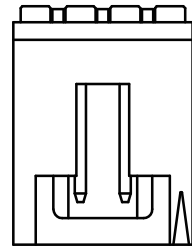
- Current Rating : 3A AC/DC
- Withstanding Voltage : 1,000V AC/minute
- Insulation Resistance : 1,000M Ω min.
- Temperature Range : -25°C to +85°C
- Contact Resistance : 20m Ω max.

Poles	Dimensions(mm)			
	A	B	C	D
2	2.54	7.62	5.60	—
3	5.08	10.16	8.14	—
4	7.62	12.70	10.68	5.08
5	10.16	15.24	13.22	7.62
6	12.70	17.78	15.76	10.16
7	15.24	20.32	18.30	12.70
8	17.78	22.86	20.84	15.24
9	20.32	25.40	23.38	17.78
10	22.86	27.94	25.92	20.32
11	25.40	30.48	28.46	22.86
12	27.94	33.02	31.00	25.40
13	30.48	35.56	33.54	27.94
14	33.02	38.10	36.08	30.48
15	35.56	40.64	38.62	33.02
16	38.10	43.18	41.16	35.56
17	40.64	45.72	43.70	38.10
18	43.18	48.26	46.24	40.64

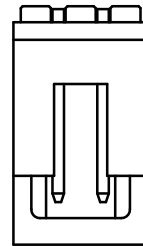
QILCLP-xxx



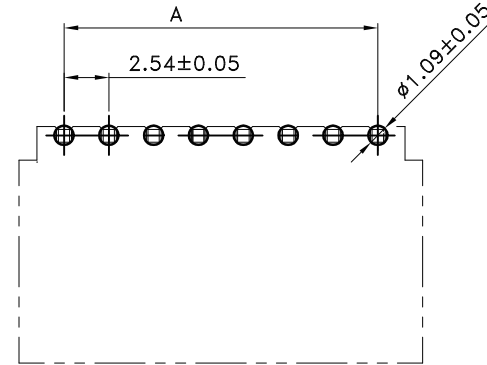
4~18 Circuit



3 Circuit



2 Circuit

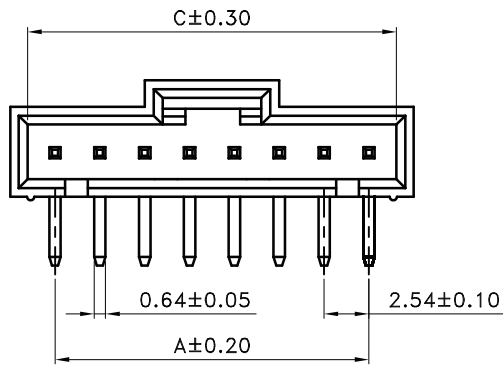


Recommended PCB Layout(Top View)

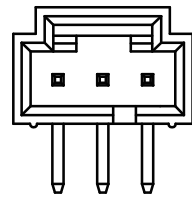
General Tolerance ±0.05

■ SPECIFICATIONS

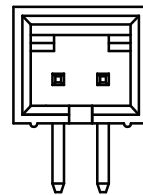
- Current Rating : 3A AC/DC
- Withstanding Voltage : 1,000V AC/minute
- Insulation Resistance : 1,000MΩ min.
- Temperature Range : -25°C to +85°C
- Contact Resistance : 20mΩ max.



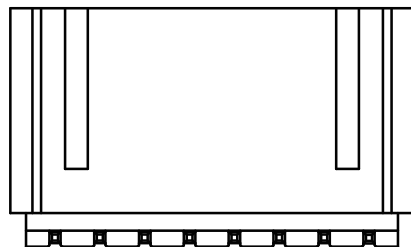
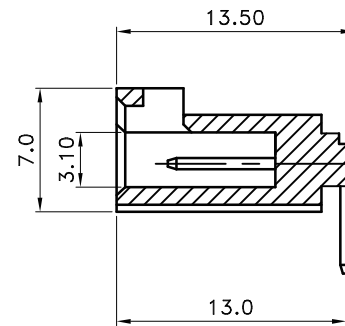
4~18 Circuit



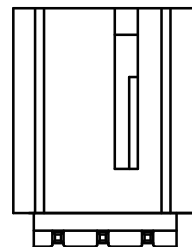
3 Circuit



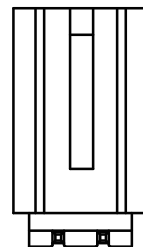
2 Circuit



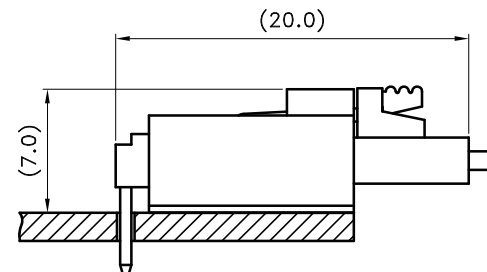
4~18 Circuit



3 Circuit



2 Circuit



Assembled on the PCB

Poles	Dimensions(mm)		
	A	B	C
2	2.54	7.62	5.66
3	5.08	10.16	8.20
4	7.62	12.70	10.74
5	10.16	15.24	13.28
6	12.70	17.78	15.82
7	15.24	20.32	18.36
8	17.78	22.86	20.90
9	20.32	25.40	23.44
10	22.86	27.94	25.98
11	25.40	30.48	28.52
12	27.94	33.02	31.06
13	30.48	35.56	33.60
14	33.02	38.10	36.14
15	35.56	40.64	38.68
16	38.10	43.18	41.22
17	40.64	45.72	43.76
18	43.18	48.26	46.30